

DÉCORS BARBARES

BY NATHALIE FARMAN-FARMA

PATTERN *Fleur de steppes*

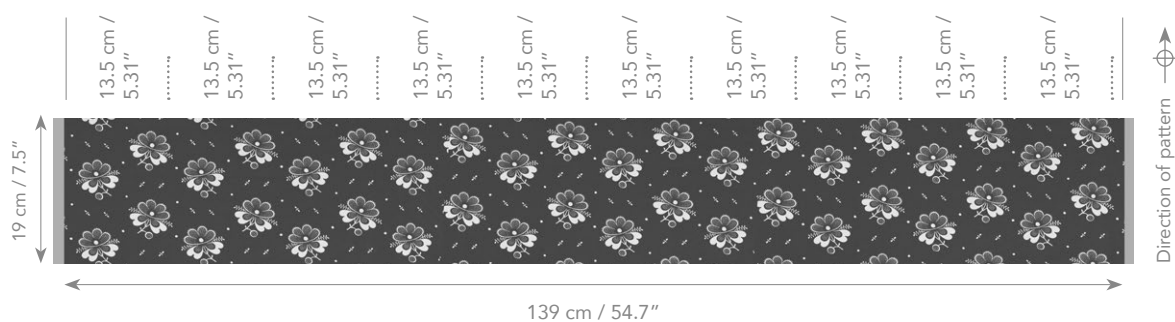
REF 0010 / RED
0011 / BLUE

CONTENT 100% COTTON

PATTERN WIDTH 139 CM / 54.7"

REPEAT WIDTH 13.5 CM / 5.31"

REPEAT HEIGHT 19 CM / 7.5"



HAND PRINTED IN FRANCE

INFO@DECORSBARBARES.COM
INSTAGRAM: @NATHALIEFARMANFARMA
WWW.DECORSBARBARES.COM